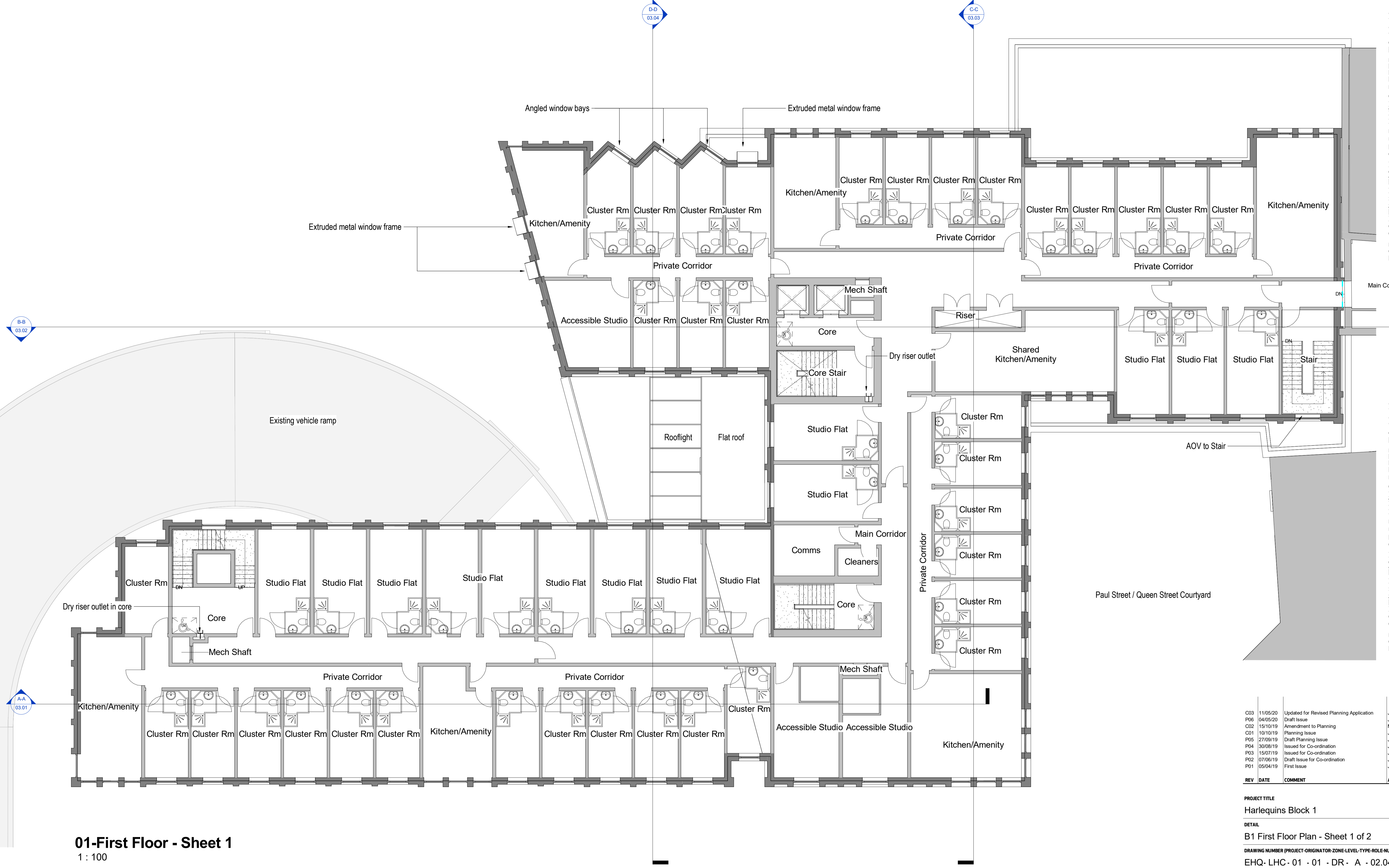


FOR CONTINUATION OF DRAWING REFER TO 02.12

FOR CONTINUATION OF DRAWING REFER TO 02.12



**01-First Floor - Sheet 1**  
1 : 100

REV	DATE	COMMENT	AUTH/CHKD
C03	11/05/20	Updated for Revised Planning Application	JS/IMP
P06	04/05/20	Draft Issue	JS/IMP
C02	15/10/19	Amendment to Planning	MF/IMP
C01	10/10/19	Planning Issue	JS/IMP
P05	27/09/19	Draft Planning Issue	JS/IMP
P04	30/08/19	Issued for Co-ordination	JS/IMP
P03	15/07/19	Issued for Co-ordination	JS/IMP
P02	07/06/19	Draft Issue for Co-ordination	JS/IMP
P01	05/04/19	First Issue	JS/IMP

**PROJECT TITLE**  
Harlequins Block 1

**DETAIL**  
B1 First Floor Plan - Sheet 1 of 2

**DRAWING NUMBER (PROJECT-ORIGINATOR-ZONE-LEVEL-TYPE-ROLE-NUMBER)**  
EHQ-LHC-01-01-DR-A-02.04

STATUS	STATUS DESCRIPTION
S2	Planning Issue

REVISION	DATE	SCALE	LHC PROJECT NUMBER
C03	02/15/19	1 : 100@A1	17161

CONTRACTORS MUST CHECK ALL DIMENSIONS ON SITE. ONLY FIGURED DIMENSIONS ARE TO BE WORKED FROM. DISCREPANCIES MUST BE REPORTED TO THE ARCHITECT BEFORE PROCEEDING @ THIS DRAWING IS COPYRIGHT

**lhc design**

EXETER 0190 444334  
PLYMOUTH 0752 669368  
ST AUSTELL 0150 950233  
lhc.net

